

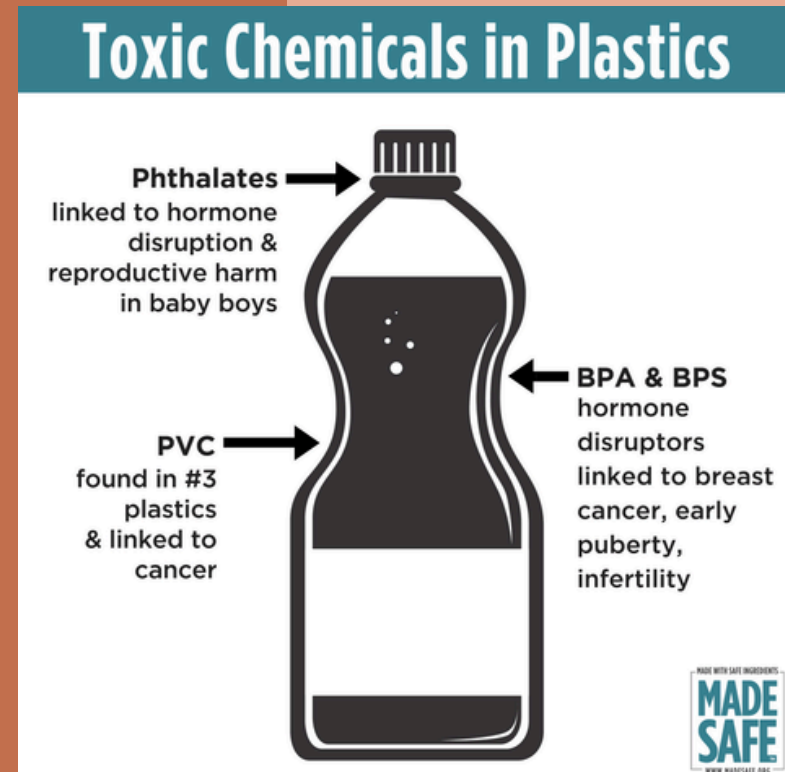
# 4 Reasons

To reduce plastic waste

In Hawaii



**Plastics can lead to negative effects such as premature births, infertility, cancers, etc.**



Ways that we can help to prevent the release of toxic chemicals of plastics include reducing the use of single-use plastics, opting for reusable alternatives, etc.

**Scientists state that an estimated 22 million tons of plastic enters the environment, with recovery rates well below 10%.**



A few ways that we can help to reduce the amount of plastic waste that enters the environment include buying locally and fresh, reducing food waste, buying in bulk, etc.

**Poorer countries often have far less opportunity for use of proper protective equipment, which can often lead to fatal diseases.**

One way that this can help be prevented is by donating to a website that is dedicated to funding poorer countries in order to be able to provide them with proper protective equipment.





## PLASTIC WASTE

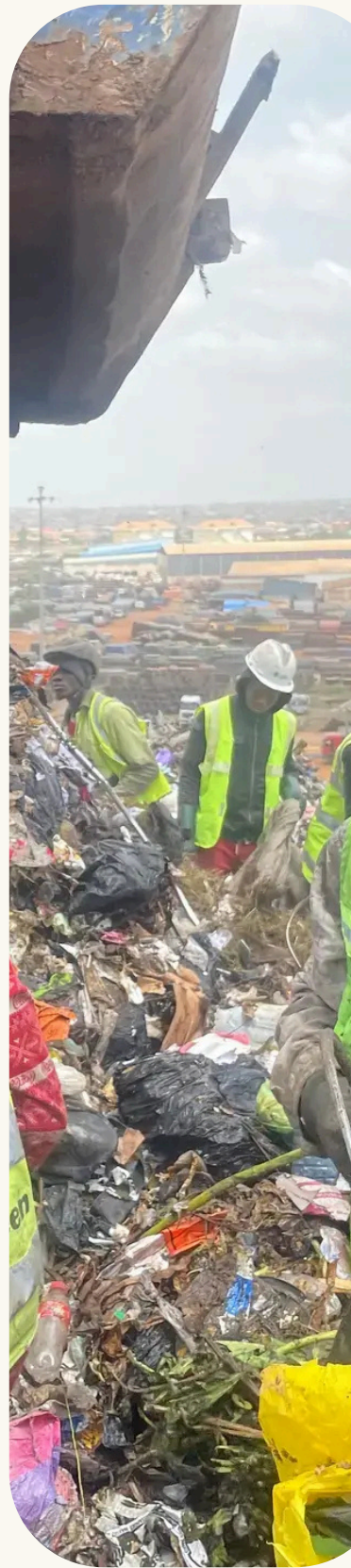
**There are many things that we can do in order to reduce plastic waste in Hawaii, so make sure to do various things such as buying locally, buying reusable items rather than single-use plastics, etc.**



J.D AND D.C

---

# TRASH SORTERS IN GHANA FACE HEALTH AND SAFETY RISKS



SWIPE →





# PLASTIC IS MATERIAL KNOWN FOR ITS ABILITY TO MOLD INTO VARIOUS SHAPES DUE TO ITS PLIABLE NATURE.

Essentially, they are polymers made up of long chains of molecules called monomers, which can be linked together to create strong and durable materials with diverse properties depending on their composition.



# DIFFERENT CHEMICALS CAN LEACH FROM OUR PLASTIC WATER BOTTLES, KNIVES AND DERMATOLOGIC PRODUCTS TO ENTER OUR BODIES.

These compounds are linked to serious health issues such as endocrine disruption, weight gain, insulin resistance, decreased reproductive health, and cancer.







# TO MINIMIZE YOUR EXPOSURE TO HARMFUL PLASTIC CHEMICALS, YOU CAN:

- Avoid single-use plastics:
- Store food in glass or metal containers
- Buy loose produce
- Don't heat food in plastic
- Check plastic labels



J.D AND D.C

---

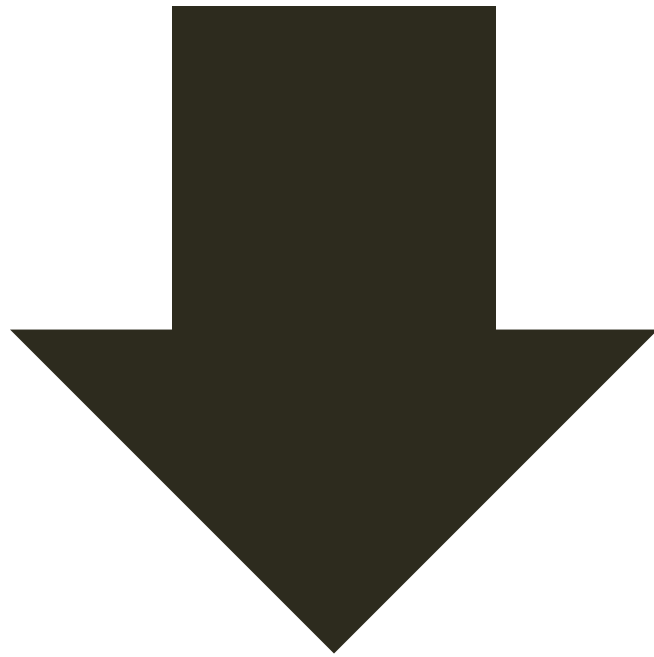
IN THESE  
PICTURES  
WORKERS IN  
GHANA HAVE  
NO PROTECTION  
AND ARE  
GETTING SICK  
AND ARE  
FACING HEALTH  
AND SAFETY  
RISKS





# WANT MORE INFORMATION?

## LINK BELOW



### PICTURES AND SOURCES FROM:



**Trash Sorters in Ghana Face Health and Safety Risks**  
Waste pickers play an important role in the recycling process. But for waste pickers working in a landfill in Accra, Ghana, it's dangerous work. Thirty-six-year-old Johnson Doe has worked as a waste...

Pulitzer Center



**Microplastics on Human Health: How much do they harm us?**

On this International Day of Persons with Disabilities (PWD), we celebrate the transformative power of leadership by PWDs. This year's theme, "Amplifying the..."



# EFFECTS OF PLASTIC GLOBALLY





# HEALTH IMPACTS OF PLASTIC POLLUTION

Plastic pollution harms health by causing hormonal and respiratory issues. This puts waste pickers at a risk of infectious diseases such as HIV and Hepatitis B & C. Human endocrine, nutritional, and metabolic system.





# SOCIAL JUSTICE

At the landfill, there is no safety procedures for landfill pickers.

- exposes their skin to certain corrosive and carcinogenic elements.
- there is no proper sanitation for menstrual needs.





# BACKGROUND INFO ABOUT PLASTICS

Plastics have been around for a very long time and are versatile, low-cost materials from polymers, but they cause environmental issues due to waste and recycling challenges. Harm occurs at every stage of the plastic lifestyle.





# CALL TO ACTION

Act now by reducing plastic use, and supporting candidates who would invest time into signing global plastic treaties.







# DID YOU LEARN ANYTHING FROM THIS?

Be sure to save it so you  
can come back to it later!



The background features a light blue base color with several large, organic, abstract shapes in a vibrant orange and a muted blue-grey. These shapes are layered and overlap, creating a modern, graphic feel. The text is centered and reads:

# **The Global Effects of Plastic Pollution**

# What are Plastics?

**Plastics, are malleable and synthetically (or semi-synthetically) made material**



**Often made up of things such as coal, and crude oil the production of plastic itself also contributes to global warming**

**There is thousands of kinds plastics in he world, each of them specifically designed for their usages. To simplify, we created the 7 categorizes of plastics.**

**Polyethylene terephthalate (PET)**

**High density polyethylene (HDPE)**

**Polyvinyl chloride (PVC)**

**Low Density polyethylene (LDPE)**

**Polypropylene (PP)**

**Polystyrene (PS)**

**Other types of plastics such as Acrylics, Fiberglass, etc.**



# Human Health Impacts

**Despite previously being seen as beneficial to People over the years, many overlooked the side effects of plastics, such side effects are;**

Plastics that have broken down overtime (micro-plastics) get into the bloodstream and **damage cells**

Plastics often contain a concoction of chemicals inside of them, these chemicals being **harmful** to our bodies.

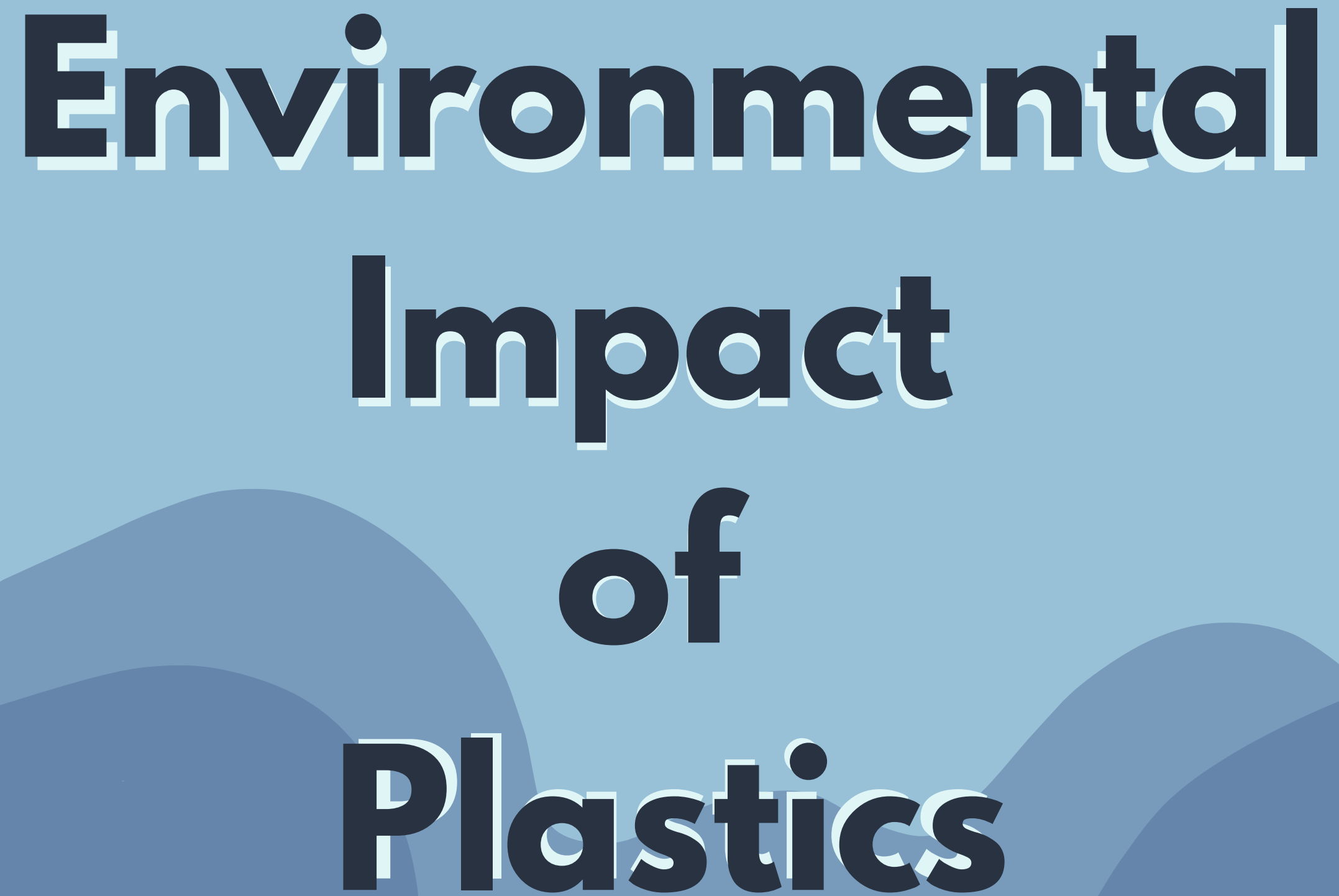
People who work with plastics are often exposed to the chemicals plastics contain, which can **lead to things such cancer, cardiovascular and lung problems**

Plastic can carry Pathogens, and can be known to **spread disease**, some types of waste such as medical waste have **even been able to spread STDs**

Plastics have been known to carry **EDC's** (endocrine disrupting chemicals) that can **cause infertility, birth defects, etc**

Plastics, with how much they've been produced, are found in everything, significantly increasing chances of all of these side effects, **in everyone**



The background of the image features several overlapping, wavy shapes in various shades of blue, creating a layered, ocean-like effect. The text is centered over this background.

# **Environmental Impact of Plastics**

**Plastic debris, on land and in the ocean, commonly gets caught around an animal, which can strangle it to death.**

**Additionally, Animals eat plastics either through mistaking it for real food, or because what they eat has plastic, this leads to them dying from lack of nutrition, internal damage from plastics, chemicals, blockages, etc.**

**The way plastics are made also contribute to global warming, as they are commonly created through means that require fossil fuels like coal and oil, Landfills that contain plastic also emit methane gas into our atmosphere.**



# Ways to stop/reduce Plastic pollution

**Recycle or Reuse plastics  
Instead of throwing them away**



**Try to use Bio plastics instead of  
traditional plastics**



**Avoid single use plastics like  
bags, utensils, straws, etc**



**Assist in things such cleanups**

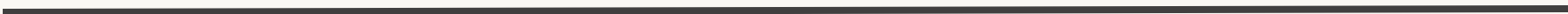






# Plastics in Ka'u

PLASTICS ARE MADE FROM NATURAL MATERIALS SUCH AS CELLULOSE, COAL, NATURAL GAS, SALT AND CRUDE OIL THROUGH A POLYMERISATION OR POLYCONDENSATION PROCESS.



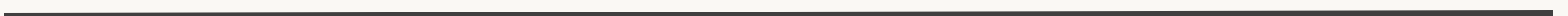


---

02

# Health Effects

Plastic pollution is harmful for the animals and people. It could even cause cancer and birth defects.





---

# Social Justice

Waste picker barley make a living  
and are vulnerable to exploitation  
and exposure and toxic chemical.







# Call To Action In Ka'u

In Ka'u we should always recycle plastic, we should clean up when we see rubbish on our beaches and our neighborhood. We should just use less plastic or ban single use





PAGE INSTAGRAM

CAROUSEL:

PLASTIC





Some health impacts from plastic pollution is HIV and hepatitis B and C. You can reduce risk of people dying. You can get these health impacts by consuming food or water that has been contaminated. If not, you can get them by spread through contact with the blood of others.









Plastic pollution is the accumulation of plastic waste in the environment, including oceans, rivers, and land. It can also negatively impact wildlife and ecosystems due to its persistence and inability to fully decompose.





# Plastic pollution



## what is plastic particles?

Plastic particles, also known as microplastics, are small pieces of plastic that can range in size from 1 nanometer to 5 millimeters



# Environmental Health Findings

- Here are some ways to help the environmental areas: Put Up Signs and Educate Visitors. ...
- Install Bins, Trash Cans, and Recycling Bins. ...
- Maintain Adequate Waste Collection. ...
- Put in The First Cleanup Effort. ...
- Maintain and Clean the Forest And Conservation Areas Regularly. ...
- Utilize Security Measures.

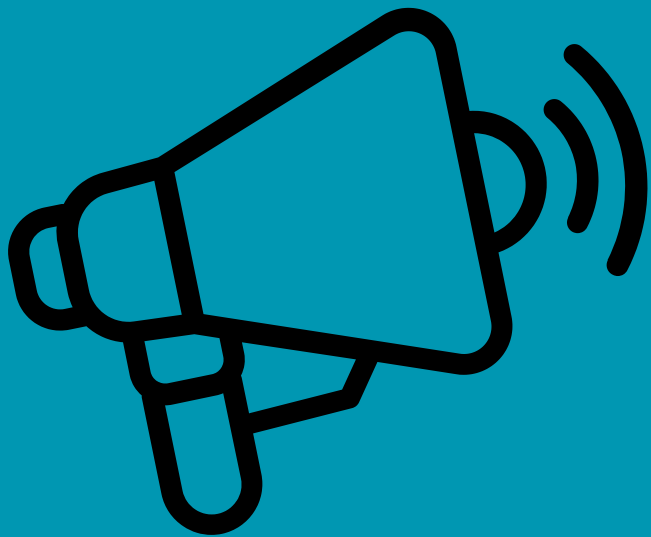
The Environmental health findings in Hawaii primarily highlight concerns around climate change impacts like rising sea levels, coastal erosion, increased ocean acidity, and extreme weather events





# Call to action

The call to action on plastic pollution urges individuals and organizations to take immediate steps to significantly reduce plastic waste by actively choosing reusable alternatives, supporting policies that limit single-use plastic production, advocating for better recycling systems, and raising awareness about the harmful impacts of plastic pollution on our environment and wildlife



# Health Impacts of plastic pollution

Microplastics are found in many parts of the body, including the liver, kidneys, placenta, lungs, bloodstream, and gastrointestinal tract. They can cause oxidative stress, DNA damage, and changes in gene activity, which are known risks for cancer.

To minimize the health impacts of plastic pollution, individuals can significantly reduce their use of single-use plastics, opt for reusable alternatives like water bottles and shopping bags



# PLASTICS

By: Hezykiah, Tia





# Background info about plastics

Plastics are complex, highly heterogeneous, synthetic chemical materials. Over 98% of plastics are produced from fossil carbon- coal, oil and gas. Plastics are comprised of a carbon-based polymer backbone and thousands of additional chemicals that are incorporated into polymers to convey specific properties such as color, flexibility, stability, water repellence, flame retardation, and ultraviolet resistance.

Many of these added chemicals are highly toxic. They include carcinogens, neurotoxins and endocrine disruptors such as phthalates, bisphenols, per- and poly-fluoroalkyl substances (PFAS), brominated flame retardants, and organophosphate flame retardants. They are integral components of plastic and are responsible for many of plastics' harms to human health and the environment.



# Health Imapacts on plastic pollution

Some 13,000 chemicals are associated with plastic production, of which only 7,000 or so have been investigated for their health and environmental impacts. Nearly half of those studied have elements deemed hazardous to human health, but the research—spanning 50 years, multiple languages, thousands of publications, and an alphabet soup's worth of acronyms, synonyms, and chemical compounds—is difficult to navigate. Yet doing so has become increasingly important as plastic production ramps up, along with its potential for causing serious threats to human health.





# Environmental Health Findings

At the Kpone Landfill, all sorts of insects, including maggots, and other pests can be found on decaying garbage, feasting on scraps of food and nesting in rotting material.

Then, there's the medical waste scattered throughout — syringes, blood, pins, needles and other equipment.



# **Call To Action**

## **BE A FRIEND:**

- **Clean up your trash**
- **Use the Trash Cans**
- **Minimize single use plastic**
- **Reduce, Reuse Recycle**

